

**NEW**

**ROOF ANCHOR**



## **IDEAL SOLUTION FOR BOTH RESIDENTIAL AND COMMERCIAL APPLICATIONS.**

### **L4548 Multipurpose Surface Mounted Anchor**

- Single person fall arrest anchor for use on a variety of selected roof sheeting.

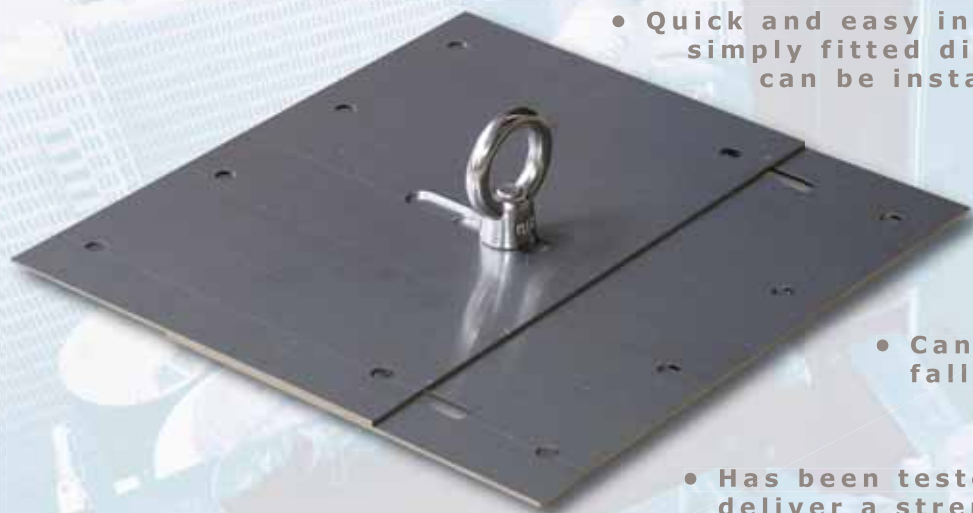
- Quick and easy installation, the anchor is simply fitted directly to the roof sheeting - can be installed by a single person.

- All metal components are manufactured from 316 grade stainless steel.

- Can be used in both fall arrest or fall restraint applications.

- Has been tested to verify that it will deliver a strength rating of 15kN on the roof sheeting when installed on an adequate roof structure.

- Large eye allows for easy attachment of lanyards.
- Designed for fall arrest forces acting parallel to the roof ribs.
- Data/inspection label included.
- Available through Capital Safety's network of accredited installers.
- Meets or exceeds all applicable industry standards.

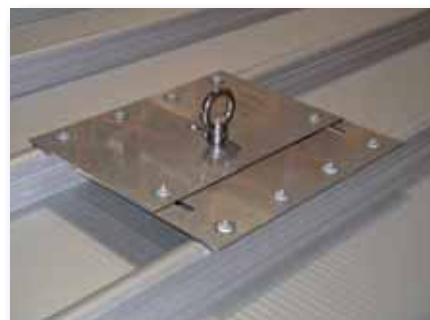


**DBI-SALA Roof Anchors** DBI-SALA's permanent purlin, truss or surface mounted roof anchors are ideal for both residential and commercial applications. The anchors provide economical solutions for fall protection during the initial construction stage as well as future roof access and maintenance. All anchor components are manufactured from 316 grade stainless steel and are able to sustain a load of up to 22kN for the L4543 & L4544, and 15kN for the L4548. The anchors can be used as single anchor points or in certain circumstances as intermediate bracket support posts for DBI-SALA temporary and permanent horizontal lifeline systems.

**How it Works** The anchors are designed to deform under load. In the event of a fall, the anchors absorb most of the energy bending along the length of the stainless steel threaded rod (L4543 & L4544), or deformation of the plate (L4548). The load distribution qualities of the DBI-SALA anchor limits the forces and results in a lower impact on the user, and the roof structure. Each anchor carries a unique batch number for traceability and certification requirements.

### Simple, Fast and Efficient Installation

The anchors can be installed during roof construction or retrofitted after the building is completed to steel or tiled roofs. The purlin mount anchor is secured by drilling a hole through the roof sheeting and the standard C or Z section purlin (min 1.2mm gauge) and tightening the threaded rod with the top mounted eye bolt against an elongated nut. For a timber truss, the roof anchor is secured with the use of a flat 5mm stainless steel bracket fixed to the truss with 8mm bolts. The surface mounted anchor is directly fastened to the roof sheeting with rivets. Waterproofing for steel roofs is achieved through the use of a rubber gasket, where tiled roof applications require the use of a dektite seal. Please refer to the user instruction manual for complete installation details.



L4548 Surface Mounted



L4543 Purlin Mounted



L4544 Truss Mounted

## Roof Anchors:

**L4543:** Purlin mounted for steel roofs

**L4544:** Truss mounted for steel or tiled roofs

**L4548:** Surface mounted for steel roofs

*NOTE: L4548 surface mounted steel roof anchor requires the rubber gasket and rivets to be ordered separately: P-1090: Rivets, 7240204: Rubber gasket, 25m roll*

### Specifications:

**Weight (Approx):** L4543 - 1.4kg, L4544 - 3.2kg, L4548 - 2.2kg. **Eye Bolt with 16mm threaded bar:** 316 grade stainless steel. **Tube:** 316 grade stainless steel, **M16 Relieved Nut:** 316 grade stainless steel. **Washer:** Nylon for use with model L4543 only. **Plate:** L4543 - 316 grade stainless steel, 50mm x 10mm x 100mm; L4544 - 316 grade stainless steel, 75mm x 6mm x 300mm; **Weather Seal:** L4543 - neoprene rubber gasket, L4544 - dektite seal, L4548 - rubber gasket. **Compatibility:** DBI-SALA anchors are designed for use with DBI-SALA approved components and systems or as recommended by a competent person. **Rating:** L4543 & L4544 - 22kN (when installed on an adequate roof structure, which is capable of taking a fall for up to two people); L4548 - 15kN (when installed on an adequate roof structure, which is capable of taking a fall for one person). **Standards:** AS/NZS 1891.4. **Special Instructions/Conditions of Use:** Reading user instruction manual prior to use is essential. To be installed by an accredited Capital Safety Installer. Annual inspection and re-certification is required as per AS/NZS 1891.4.2000.

### Capital Safety:

Australia: 1800 245 002 New Zealand: 0800-212 505 Asia: +852 2992 0381

USA: 800-328-6146 Canada: 800-387-7484 Northern Europe: +44 (0) 1928 57 1324

Europe, Middle East & Africa: +33 (0) 497 10 00 10 Or visit: [WWW.CAPITALSAFETY.COM](http://WWW.CAPITALSAFETY.COM)